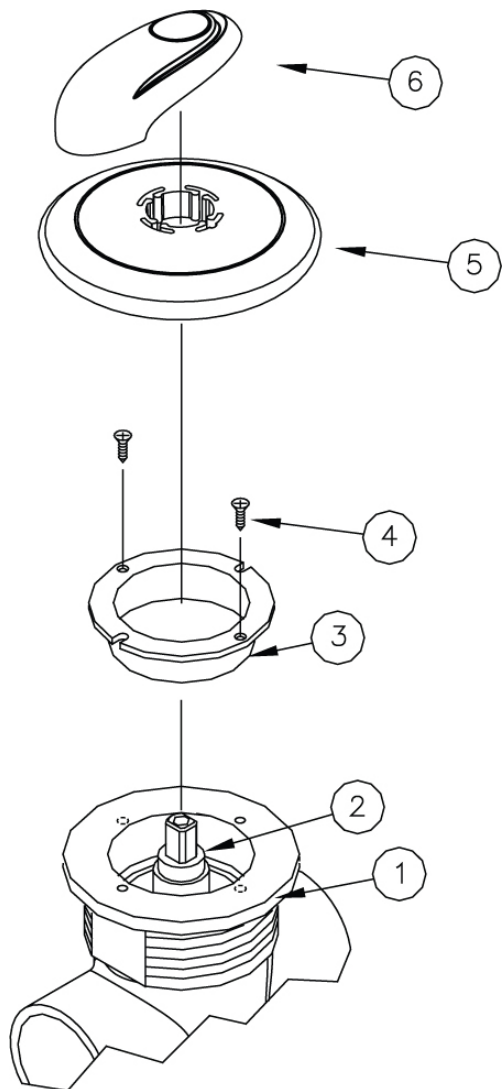


## DIVERTER RETAINER AND RETROFIT INSTRUCTIONS



### TOOLS REQUIRED

- SNAP RING PLIERS
- DRILL
- PHILLIPS SCREW DRIVER

### INSTRUCTIONS

1. Verify the valve body (2) is completely assembled including all o-rings.
2. Reinstall snap ring into groove inside collar (1)
3. Place retainer (3) on top of the collar (1). Align slotted holes on retainer (3)
4. Carefully drill two 7/64" holes using the retainer's holes as guides (item 3)
5. Install the two #6 screws (4) in the new holes using a Phillips Screw Driver
6. Install the valve lever (6) and check the valve for free movement.
7. Turn on jets and test action of diverter.
8. Remove lever (6) and reinstall the bezel (5) and lever (6).