

REMOVAL and REPLACEMENT

Hot Spring NXT Corner Panel

Before removing the Corner Panel, the Side Panels must be removed. Follow the instruction for removing the Panels in the Service Instruction: *NXT Door/Panel Removal*

When replacing the NXT Corner Panel, you will need the following:

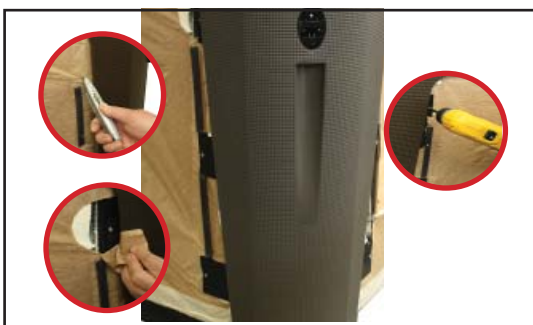
1. **NXT Corner Panel.**
2. **Phillips Head Screwdriver.**
3. **Utility Knife.**
4. **Foam, Spray (P/N 70293).**

Removal:

1. The Corner Panel mounting tabs and screws are located behind the protective paper in the 6 locations indicated below.



2. Cut and remove the protective paper from the 6 locations to expose the screws and mounting tabs. Remove the 6 screws from the mounting tabs.



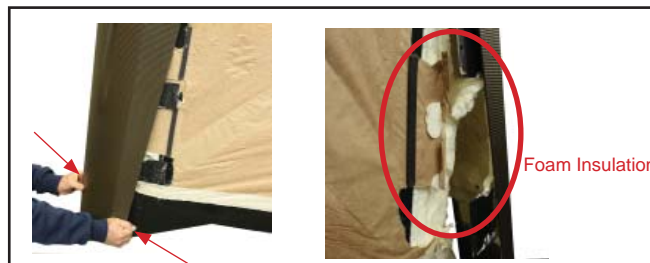
3. Grasp one side of the Corner Panel with 2 hands and pull to loosen the bottom of the Corner Panel.



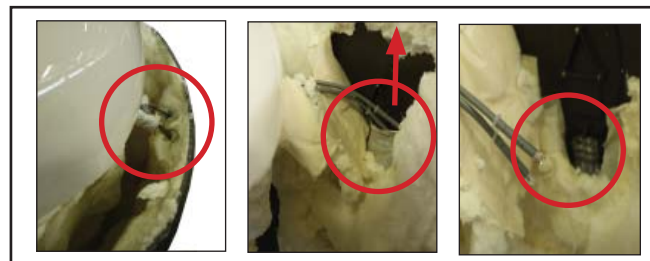
4. Grasp both sides of the bottom corners of the Corner Panel and pull slowly to remove the Corner Panel. The Corner Panel will be stuck to the foam insulation behind the Corner Panel and will require some force to separate from the foam. Some of the insulation foam will remain stuck to the Corner Panel.

NOTE

The corner LED Lights are attached to the Corner Panel and must be removed before the Corner Panel Can be fully separated from the spa. **Follow Step 5.**



5. The LED Lights will be hidden behind a layer of foam and masking tape. Pry the foam and masking tape to expose the LED Light Housing. Pull the 2 LED wires straight up to separate the LED Light from the LED housing.



6. The Corner Panel can now be separated from the Spa.



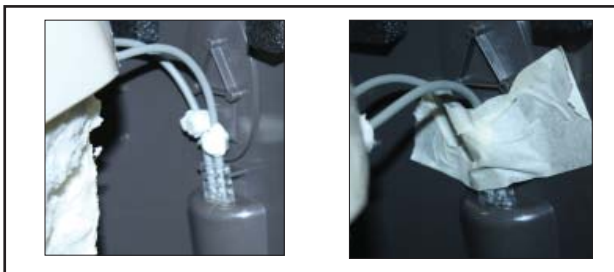
Hot Spring NXT Corner Panel

Replacement:

1. Spray foam into any void left in the insulation where the foam came of from the removal of the Corner Panel. After the foam has hardened, trim excess foam to allow for the replacement Corner Panel to seat correctly onto the spa.



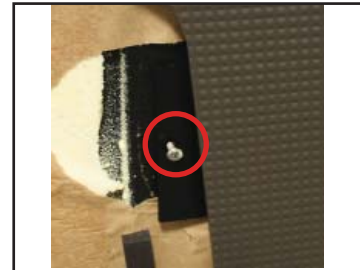
2. Insert the LED Lights into the LED Light Housing and tape in place with wide masking tape.



3. Insert the upper tab of the Corner Panel under the lip of the spa shell. Align the 6 screw holes on the mounting tabs with the existing screw holes on the spa.



4. Insert 6 screws through the mounting tabs and into the existing 6 screw holes in the spa. This will ensure that the new Corner Panel is positioned correctly.



5. Tighten the 6 screws in the following sequence.



6. Transfer the Cover Clip from the old Corner Panel to the replacement Corner Panel.



* Refer to the Service Instruction: **NXT Door/Panel Removal** for instruction on re-installing the Side Panels.

Should you have any questions, please contact our Technical Support department.