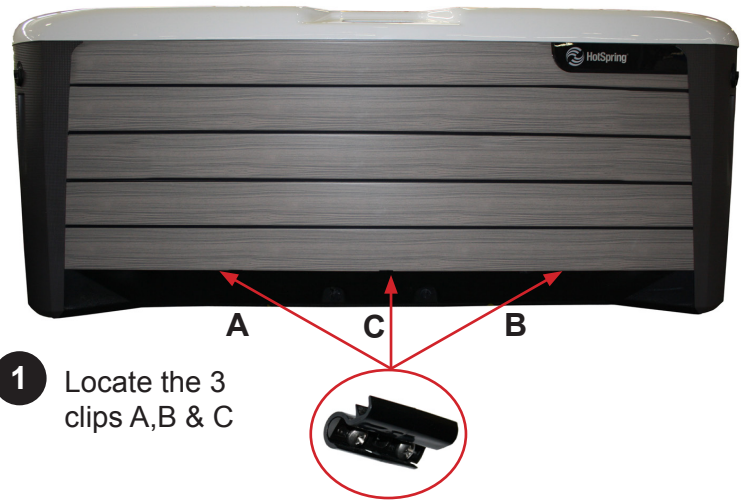
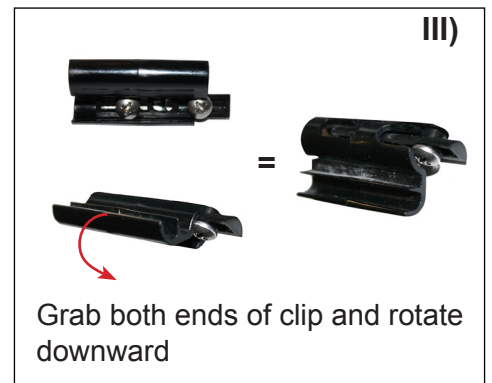
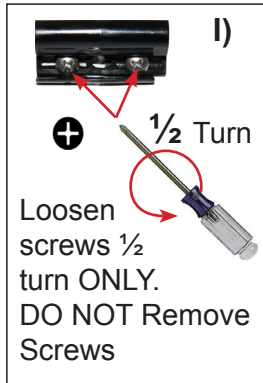


# NXT DOOR / PANEL REMOVAL



**1** Locate the 3 clips A,B & C

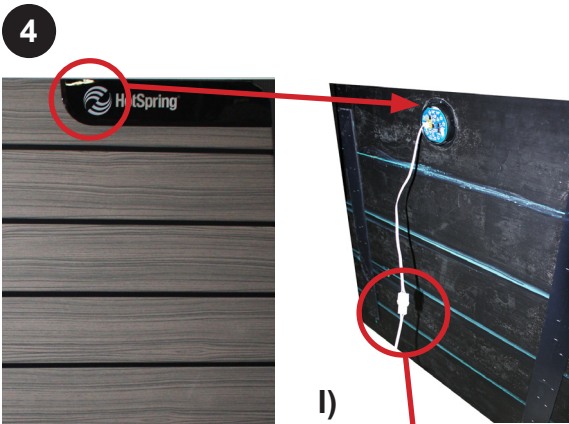
**2** Start with clip A and perform the following instructions, then repeat in order for steps B and C



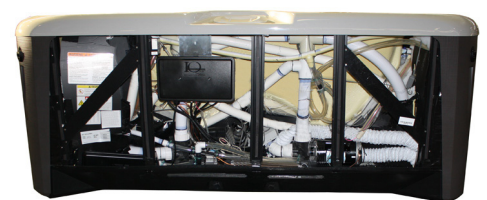
Grab panel on bottom edge and lower



Set panel on ground (go to Step 4)



Disconnect logo light wire from back side of door panel

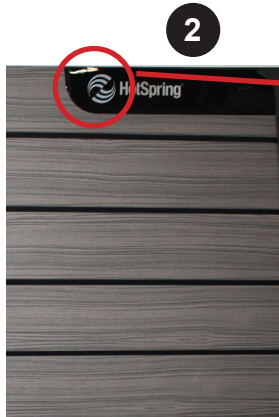


Remove panel from spa and place in cool shaded place

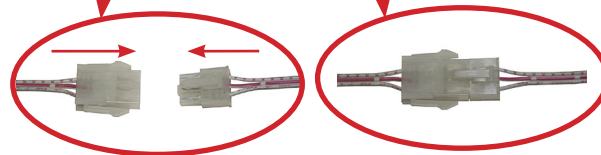
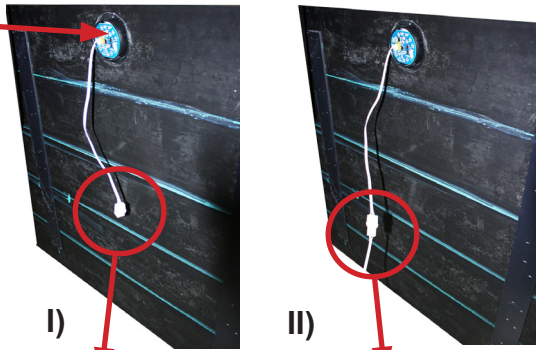
# NXT DOOR / PANEL REPLACEMENT



**1** Set panel on ground in front of spa



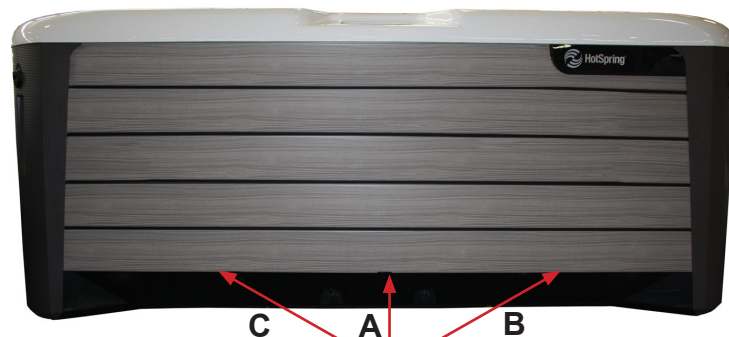
**2**



Reattach logo light wire from back side of door panel, snap connectors together



Grab panel on bottom edge and lift making sure panel is behind corners and under the bartop



**3** Locate the 3 clips A,B & C



**4** Start with clip A and perform the following instructions, then repeat in order for steps B and C

